

PC Pack „Bluetooth“: SensLab BT-Adapter



Product information and manual for SensLab BT-Adapter
(Model type: BT060721)
for wireless data transfer of measurement data of
Lactate Scout-handheld device with Windows PC
and suitable Software-applications

Manufacturer and Customer support:

SensLab 

Gesellschaft zur Entwicklung und Herstellung
bioelektrochemischer Sensoren mbH

Bautzner Straße 67
D-04347 Leipzig
Tel.: 03 41-2 34 18 30
Fax: 03 41-2 34 18 40
www.senslab.de
info@senslab.de



Release-Nr.

BTA 270906-E

CONTENT

1. Intended use and important notes
2. Components of PC Pack „Bluetooth“
3. Technical Specification
4. Installation of the BT-Adapter using Windows XP
5. Installation of the BT-Adapter using driver software
6. Compatibility notes
7. Data transfer
8. Functions of the BT-adapter
9. Replacing batteries

1. INTENDED USE AND IMPORTANT NOTES

The SensLab Bluetooth (BT)-adapter is intended to use with the Lactate Scout-handheld device for data transfer to a common PC, e.g. for analysis of measurement data by suitable software applications, if compatible to Lactate Scout. These software applications can normally be used without special updates or settings: The BT-adapter uses the same data protocol as serial cables, connected to COM-port.

Remaining risks by application of direct cable connections between the device and the power supply of a PC are totally eliminated by wireless Bluetooth technology. The BT-adapter is certified as „Class 3 device“ with respect to EMC for combined use with medical devices, according to the directives for In-Vitro-Diagnostica of the European Union. **Any use in life supporting systems is strictly excluded!**

Keep the BT-adapter and its components away from children, to avoid any risks by improper use. For safe and proper application of the BT-adapter read this product information carefully. Please check also the Lactate Scout instruction guide and related documents for your PC. Protect the BT-adapter against water, humidity, prolonged exposure to sunlight and temperatures higher than +50° C and lower than -10° C. Hitting, dropping or improper use may harm the functionality of the BT-adapter seriously.

The power supply of the BT-adapter is provided by two LR03/AAA-batteries (1.5 V each). Depending on the frequency and duration of use, these batteries have to be replaced frequently. **Do not connect the BT-adapter with an external power supply! This may cause serious damages on the device, and any claims or warranty support will get lost.**

The SensLab GmbH excludes any liability for the use of the BT-adapter in combination with products of another party, non-specified components and related damages. The liability is also excluded in case of technical modification of the components or any application outside the intended use.

2. COMPONENTS OF THE PC PACK „BLUETOOTH“

- a) Service-CD incl. software „Lactate Scout Assistant“
- b) Cable connection for BT-adapter and Lactate Scout
- c) USB-/Bluetooth-Dongle
- d) CD with software drivers for USB-/Bluetooth-dongle
- e) SensLab BT-adapter
- f) Screwdriver, as required for battery replacement

Not displayed:

User guide Lactate Scout Assistant-software

Product information SensLab BT-adapter



3. TECHNICAL SPECIFICATION

The SensLab BT-adapter, model type BT060721 contains transmitter with FCCID: RFR-BRS/2/IC: 4957A-BRSIS, according the Bluetooth „Class II“ standard (bridging 10 m distance at least).

4. INSTALLATION OF THE BT-ADAPTER USING WINDOWS XP

For optimized use of the BT-adapter, the operating system Windows XP with „Service Pack 2 (SP2)“ or later releases are recommended. SP2 is included in all operating systems or PCs, build after the year 2004. It is also possible to update earlier Windows XP releases with SP2: Please ask your local PC supplier.

Windows XP/SP2 is featured by automatic detection and installation of Bluetooth-devices. The detailed procedure will be described in this chapter: To install the BT-adapter on a PC with discontinued operating systems (Windows 95, 98, Me, NT/2000), please follow the instructions given in chapter 5, „Installation of the BT-adapter using driver software“.

At the beginning, ensure the Bluetooth-featuring of the used PC hardware: Some modern PCs include Bluetooth already, but typically a USB-/Bluetooth-dongle (as delivered with the PC Pack Bluetooth) must be plugged in a free USB port at first.

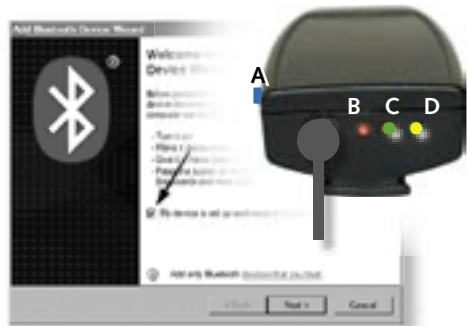
Windows XP/SP2 recognizes and installs the USB-/Bluetooth-dongle automatically. Please note the system messages: After a short time, the message appears „The hardware is now installed and ready to use“. By double-click on the Bluetooth-symbol (at the right side on the desktop task bar, as shown by arrow), the installation of the BT-adapter starts.



A new window appears, titled „Bluetooth-devices“: To add a new device, click on „Add“.



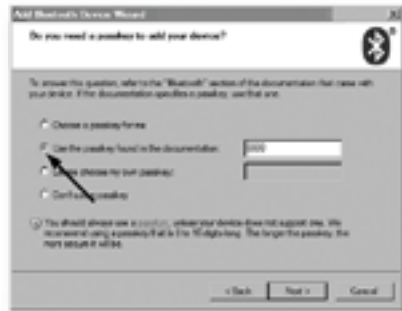
When done, a new window will be opened. As shown by arrow, click in the check box „device is prepared...“ and switch on the BT-adapter by pressing its blue button (A) briefly: The green and the yellow LED (C, D) light up. After 5s, the yellow LED turns off again. To proceed, click on „Next“:



Now the PC searches all accessible Bluetooth-devices. If successful, the SensLab BT-adapter (and other Bluetooth-devices, if accessible) will be shown in a list. Click on the symbol „SensLab BT-adapter“, and then click again on „Next“.



In the next window choose the option „Access key from documentation...“ and enter four zeros („0000“) in the field behind. Then click on „Next“. The installation will be finished now: A last window informs about the installed COM-ports, as reserved now for the BT-Adapter. Click on „Finish“ to close the installer.



This installation procedure has to be done once only (per each PC and each BT-adapter). A repeated installation may be useful only in case of unexpected problems.



To transfer data from Lactate Scout by the BT-adapter, a Lactate Scout-compatible software is required (e.g. the „Lactate Scout Assistant“ or products of another party as listed at www.lactatescout.com).

5. INSTALLATION OF THE BT-ADAPTER USING SOFTWARE DRIVERS

If using a PC with earlier Windows-releases, a special software driver must be installed at first: Attached to the USB-/Bluetooth dongle in the PC Pack „Bluetooth“, a small CD-ROM contains the „BlueSoleil“ driver application. Alternatively, software drivers of other parties are available at PC shops or in the Internet. Their installation and use may be different to „BlueSoleil“.

Close all running software applications and save your data. Insert now the BlueSoleil-CD and launch its Installer by double click on „Setup.exe“. Follow the given instructions stepwise: If finished, restart the PC again to update all system settings. The PC is now featured for Bluetooth connections.

Plug the USB/Bluetooth-dongle in a free USB-Port: It will be recognized and installed automatically „in the background“ by BlueSoleil. Afterwards a window appears („Welcome to Bluetooth“) with default connection settings: Confirm these settings by clicking „OK“.

If the BlueSoleil-software driver (see the picture below) does not launch automatically now, click on the Bluetooth-symbol at the right side on the desktop task bar, as shown by arrow.

Switch on the BT-adapter by pressing its blue button (A) briefly: The green and the yellow LED (C, D) light up. After 5 s, the yellow LED turns off again.

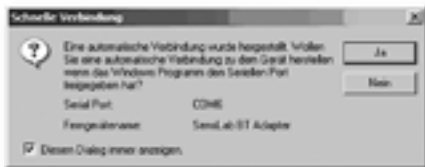


Click on the red ball in the middle of the screen. BlueSoleil searches now all active Bluetooth-devices around the PC. After 10-20 s the SensLab BT-adapter will be shown (together with other Bluetooth-devices, if accessible).

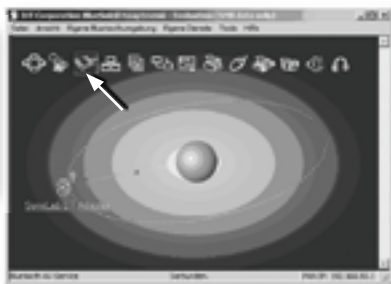


Select the SensLab BT-adapter by double-click: Its function („Serial Bluetooth connection“) is detected automatically and will be shown in the symbol bar at the top.

Click twice on the symbol in the symbol bar to get a connection to the BT-adapter. A new window will appear, titled „Quick connection“:



Confirm by clicking „Yes“: Then the BT-adapter can always be connected automatically. If the connection settings are completed, the BT-adapter can be disconnected again: Click with the right mouse button on the symbol „Serial Bluetooth connection“ and disconnect. The whole installation procedure must be done once only (per each PC and each BT-adapter). A repeated installation may be useful only in case of unexpected problems.



To transfer data from Lactate Scout by the BT-adapter, a Lactate Scout-compatible software is required (e.g. the „Lactate Scout Assistant“).

6. COMPATIBILITY NOTES

The „Lactate Scout Assistant“-software scans always all installed COM-ports for data transfer and will find the port of the BT-adapter automatically. Contrary to Windows XP, software drivers as „BlueSoleil“ operate delayed sometimes, causing connectivity problems: Using the „Lactate Scout Assistant“, it is recommended to select the option „BT compatibility mode“ by „settings“. This will reduce the speed of data transfer for an improved connectivity.

Using software applications of another party without „port search“, the COM-port used by the BT-adapter must be set manually by special settings. Software drivers as BlueSoleil are also installing multiple COM-ports for different kind of Bluetooth devices: Herein the port-number of the BT-Adapter may be higher than the usual COM port numbers. If only COM1 - COM4 are supported by your software, and the BT-Adapter uses e.g. COM7, your software will not work: Ask your software supplier for help or updates.

7. DATA TRANSFER

To send data from Lactate Scout by the BT-adapter, make sure that both devices are connected by the connection cable (as delivered in the PC Pack „Bluetooth“): The plugs are identical, fitting into the same sockets without any difference. The plugs must be inserted firmly.

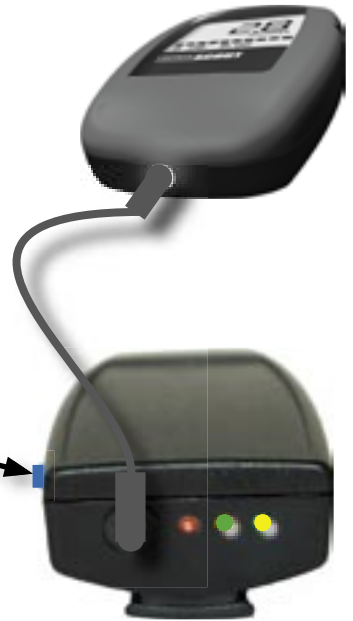
Switch on the Lactate Scout as usual, by pressing the scroll wheel button for 2 s, or by inserting a test strip.

Switch on the BT-Adapter by pressing its blue button (ON/OFF, as shown by arrow) briefly: The green and the yellow LED light up. After 5 s, the yellow LED turns off again: The BT-Adapter is ready for use now.

Open a Lactate Scout-compatible software application to import data from Lactate Scout. Using the „Lactate Scout Assistant“, click on the button „Receive data“.

For the first data transfer (after launching the software application), the „Lactate Scout Assistant“ scans all installed COM-ports and finds the BT-adapter automatically. Using 3rd party software applications without such features, the COM-port used by the BT-adapter must be set manually by special settings. Therefore note chapter 6, „Compatibility notes“.

If the BT-adapter is found and the Lactate Scout is connected, the yellow LED (Connection) lights up and an acoustic signal will be heard. Now the memory data of Lactate Scout will be sent to the PC (max. 20s). In the „Lactate Scout Assistant“ the received data will be displayed in the left table („test list“) below the graph window. If the data were corrupted or the data transfer was aborted unexpectedly, an error message will appear.



Transfer problems may be caused e.g. by unknown interferences or by too far distances. But contrary to infrared-connections, the BT-adapter needs not to be „visible“ for the receiving PC: It does not harm the signal quality seriously if walls, firm objects or persons are located between. Even mobile phones or other Bluetooth-devices have no significant influence herein. In case of transfer problems, check if the Lactate Scout and the BT-Adapter are switched on and ready for use, and start the data transfer again (Lactate Scout Assistant: „Receive data“).

8. FUNCTIONS OF THE BT-ADAPTER

The green LED (POWER/ON) indicates active power supply: The BT-Adapter is switched on and ready for use. If nothing happens during 2 min, the green LED flashes 10s before the BT-Adapter switches off automatically. If the green LED flashes or was turning off already, press briefly the blue button (ON/OFF) to switch on the BT-adapter again.

The yellow LED (CONNECTION) lights only if a data connection has been established. It disappears if the data transfer is aborted, if the software application is closed or after 3 min without connection.

The red LED (LOW BAT) lights continually if the battery power is not sufficient anymore: The batteries must be replaced soon. Please note therefore the next chapter „Replacing batteries“.



To switch off the BT-adapter manually, press the blue button (ON / OFF) for 3s: The green LED turns off then.

9. REPLACING BATTERIES

The SensLab BT-Adapter is delivered with two batteries, type AAA/LR03 (1,5 V) inserted. Their lifetime may be different, but typically the power support is sufficient for up to 5000 data transfers or 14h permanent action. The red LED (LOW BAT) indicates low battery power; the batteries must be replaced with new ones.

For battery replacement the BT-adapter must be switched off (green LED does not light). Take the screwdriver (contained in the PC Pack „Bluetooth“) and remove at first the screw on the backside of the BT-adapter, below the belt clip. Then remove carefully the upper case.

Remove a second screw inside the case, as shown by arrow. Remove carefully the battery-holder. The batteries can be removed now.



NOTE: To protect your environment, do not dispose used batteries in domestic waste! For safe and proper handling, use the battery waste boxes in local shops or ask your dealer.



Alkaline-batteries, type AAA/LR03 (1,5 V) as used also for the Lactate Scout device are sufficient for regular application of the BT-adapter and available at most local shops. Identical sized, special Lithium-batteries may extend the lifetime of a battery set up to 25%. In contrary, rechargeable batteries provide lower power support.

Use only the same kind of batteries at once, and take care of the correct position of batteries: As shown above, the positive pole is located left down and top right. Place the battery-holder in its position carefully (do not turn it in the wrong way!) and fix its screw. Plug the upper case carefully on the BT-adapter, turn it backside and fix the second screw below the belt clip.

Do not connect the BT-adapter with an external power supply! This may cause serious damages on the device, and any claims or warranty support will get lost.

